

REWIRABLE SWITCH



Rewirable Switch

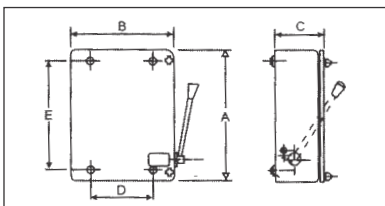
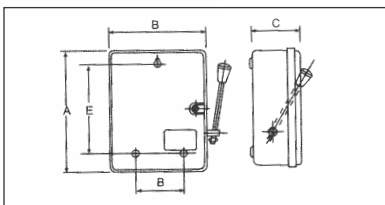


Salient Features

- All enclosures are fitted with removable top and bottom end plates and adequately sized knock outs.
- Premium quality powder coating is applied using latest techniques. The enclosures are subjected to seven tank process to ensure anti-rust conditioning. Smooth finish and protection against corrosive atmosphere.
- Tested for AC 22A utilisation category as per IS 13947 part III.
- Adequately sized silver plated terminals suitable for accomodating aluminium/copper conductor cable/busbar termination.
- Quick make and break mechanism independent of the speed of operating handle with mechanical interlocking device to prevent switching on/ when the cover is open.

Rewirable Switch Fuse Unit

- Ideal and handy for effective control of repetitive switching operations in domestic, commercial and industrial applications where heavy on load switching duties are required.
- The design ensures long life and consistent performance.
- Made of sturdy deep drawn sheet steel enclosure designed to meet the adverse conditions of application in service.
- Current carrying parts are bright tin plated for high conductivity and longer life. Fully shrouded live parts.
- Range:
 - SPN/DP - 16, 32 & 63A & 20A Split Unit
 - TP/TPN - 16, 32, 63 & 100A



Rating	Voltage	Execution	A	B	C	D	E
16	240	SPN/DP	145	103	60	62	105
32	240	SPN/DP	222	135	70	76	169.5
16	415	TP/TPN	224	173	70	85	169.5
32	415	TP/TPN	261	207	70	120	204

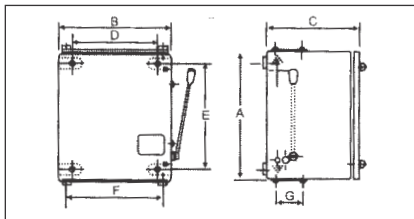
Rating	Voltage	Execution	A	B	C	D	E
63	240	SPN/DP	355	232	117	96	260
63	415	TP/TPN	355	302	117	165	260
100	415	TP/TPN	454	336	157	197	372

Combination Fuse Switch/Changeover Switch

Heavy Duty Combination Fuse Switch



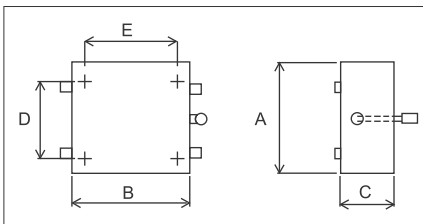
- Designed for safe and efficient power distribution with double break isolation.
- Current carrying parts are bright tin/silver plated. Shrouded with fuse resistant phenolic moulded base. Switches upto 100A have terminals of block design suitable for pin/bottle type lugs and switches of higher rating are of strip design suitable for palm type lugs.
- Short Circuit withstand capacity of 80kA suitable for bolted type HRC Fuse links.
- Range:
 - TPN - 63A, 100A, 200A, 300A & 400A



AMPS.	TYPE	A	B	C	D	E	F	G
63	TPN	290	268	217	232	195	244	62
100	TPN	290	268	217	232	195	244	62
200	TPN	355	333	279	293	223	310	125
300	TPN	355	333	279	293	223	310	125
400	TPN	485	420	323	370	218	398	125

Changeover Switch

- Ideal for safe and reliable transfer of power supply from one source to another. The design ensures long life and consistent performance. Ideally suitable for individual installation or for use in power distribution in commercial/domestic buildings and industrial applications.
- The enclosures are made of sheet steel which are robustly built to meet adverse conditions. Current carrying parts are bright tin/silver plated. Shrouded with fuse resistant phenolic moulded base. Switches upto 100A have terminals of block design suitable for pin/bottle type lugs and switches of higher rating are of strip design suitable for palm type lugs.
- Range: FP-32A, 63A, 100A, 200A, 400A & 630A



AMPS.	TYPE	A	B	C	D	E
32	FP	210	260	97	165	210
63	FP	312	290	120	253	266
125	FP	320	400	131	256	337
200	FP	490	425	235	350	288
400	FP	585	510	295	480	550
630	FP	585	510	295	480	550

General Terms

• This price list supersedes all previous price lists • All prices are in Indian Rupees only • All prices are Maximum Retail Prices (MRP) inclusive of Excise Duty and VAT/ Sales Tax as applicable • Our discount structure is exclusive of VAT/ Sales Tax & Octroi • Orders will be accepted in multiples of standard packing provided for MCBs/ Isolators in the price list/ catalogue • Prices are subject to change without notice. All dispatches will be as per price prevailing on the date of dispatch. Prices are ex-godown, exclusive of packing/forwarding/freight and insurance • Product design is subject to change without notice for continuous upgradation • Dispute, if any is subject to Noida Jurisdiction only • Company reserves the right to issue amendments which may arise due to any printing error in the price list

Channel Partner



CORPORATE OFFICE: B-24, Phase - II, Noida - 201305, U.P., India Ph.: +91-120-3853000 Fax: +91-120-3853002 E-mail: sales@indoasian.com, international@indoasian.com Website: www.indoasian.com

CUSTOMER CARE SUPPORT EXECUTIVE: B-24, Phase - II, Noida - 201305, U.P., India Ph.: +91-120-3042222 E-mail: feedback@indoasian.com

NORTH

CHANDIGARH

S.C.O.-11, 2nd Floor,
Madhya Marg, Sector-26,
Chandigarh-160002
Ph.: 0172-3934651-64
Telefax: 0172-3934656
E-Mail: in-chandigarh-office@indoasian.com

DELHI

721-722, 7th Floor,
DLF Tower B,
Jasola District Centre,
New Delhi-110044
Ph.: 011-30821773-74
E-Mail: in-delhi-office@indoasian.com

JAIPUR

433, Ganpati Plaza,
M. I. Road,
Jaipur-302001
Ph.: 0141-4113528
E-Mail: in-jaipur-office@indoasian.com

LUCKNOW

301, Chintel House,
Station Road,
Lucknow-226001
Ph.: 0522-4013210
TeleFax: 0522-4013210
E-Mail: in-lucknow-office@indoasian.com

SOUTH

BANGALORE

402, 4th Floor, Blue Cross Chambers,
Infantry Road Cross,
Bangalore-560001
Ph.: 080-25585043, 25591677
Fax: 080-25591546
E-Mail: in-bangalore-office@indoasian.com

COCHIN

65/1317, Syda Building,
2nd Floor, Kaloor-Kadavanthra Road,
Kaloor, Ernakulam District,
Kochi-682017 (Kerala)
Ph.: 0484-4055581-88
E-Mail: in-cochin-office@indoasian.com

COIMBATORE

D. No. 83,
Dr. Nanjappa Road,
Coimbatore-641018
Ph.: 0422-2302715
Fax: 0422-2302715
E-Mail: in-coimbatore-office@indoasian.com

CHENNAI

No. 5, Mahalingapuram Main Road,
Nungambakkam,
Chennai-600034
Ph.: 044-28172096, 28170527
E-Mail: in-chennai-office@indoasian.com

HYDERABAD

312, 3rd Floor,
Amrutha Estates,
Himayath Nagar,
Hyderabad-500029
Ph.: 040-66742425-29
E-Mail: in-secunderabad-office@indoasian.com

WEST

AHMEDABAD

102, 1st Floor,
Shivalik High Street,
Near Mansi Circle, Vastrapur,
Ahmedabad-380015
Ph.: 079-30002092-94
E-Mail: in-ahmedabad-office@indoasian.com

INDORE

202, KK Bafna Arcade,
Janjeerwala Square,
Racecourse Road,
Indore-401408
Ph.: 09713055522
E-Mail: in-indore-office@indoasian.com

MUMBAI

401 & 408, K.P. Arrum,
Marol Morshi Road, Andheri East,
Mumbai-400059
Ph.: 022-61035800
E-Mail: in-mumbai-office@indoasian.com

PUNE

Rajadwar Building, 4th Floor,
1307, Shivaji Nagar,
Off. J. M. Road,
Pune-411005
Ph.: 020-60500440, 60502255
Fax: 020-25520659
E-Mail: in-pune-office@indoasian.com

EAST

KOLKATA

"Raikva Building" Room No. 8, 2nd Floor,
3A Ram Mohan Garden Lane,
Beliaghata E.M. Bypass, Kolkata-700010
Ph.: 033-66041503-04
E-Mail: in-kolkata-office@indoasian.com